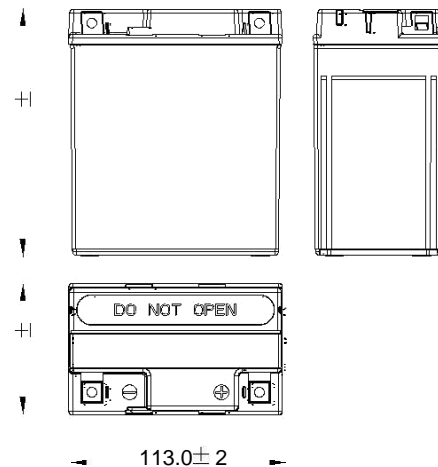


PowerStar PS7L-BS (PM7-12C)



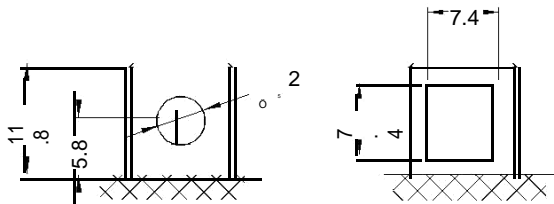
Dimensions (mm)



Standard Terminal (mm)

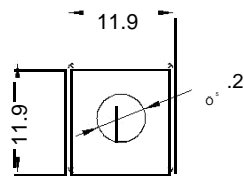
Terminal Type

A



Front View

Side View

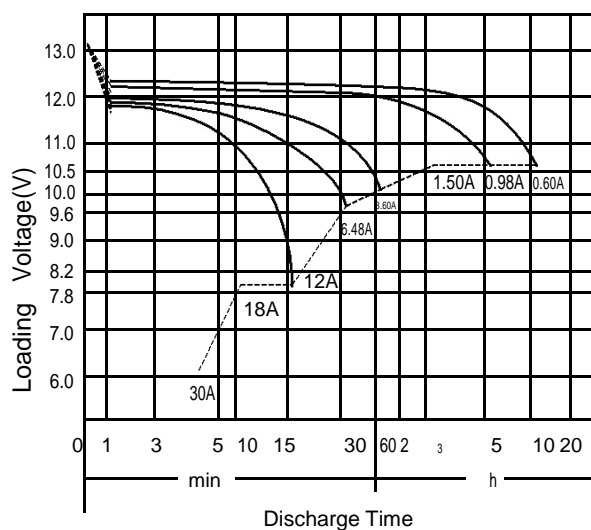


Top View

Physical Specification

Nominal Voltage		12V
Nominal Capacity (10HR)		6AH
Dimension	Length	113 ^{+/-} 2mm (4.45 inches)
	Width	70 ^{+/-} 2mm (2.76 inches)
	Container Height	130 ^{+/-} 2mm (5.12 inches)
	Total Height (with Terminal)	130 ^{+/-} 2mm (5.12 inches)
Weight	Battery(with acid): Approx 2.40kg (5.29lbs)	
	Electrolyte: Approx 0.45kg (0.99lbs)	
<div>* Sealed and non-spillable AGM battery</div> <div>* Maintenance-free</div> <div>* Powerful 85 cold cranking amps</div> <div>* Shipped pre-charged and ready to install</div> <div>* Replaces / upgrade for EB7-3</div>		

Discharge Characteristics (25°C, 77°F)



Electrical Specification

Rated Capacity	10 hour rate (0.60 A)	6.00AH
	5 hour rate (0.98 A)	4.92AH
	2 hour rate (2.10 A)	4.20AH
	1 hour rate (3.60 A)	3.60AH
	0.5 hour rate (6.48 A)	3.24AH
Capacity affected by Temperature	40°C (104°F)	106%
	25°C (77°F)	100%
	0°C (32°F)	86%
	-15°C (5°F)	65%
Self Discharge	Approximately 3% per month (25°C (77°F))	
Charging Methods	Full Charge	Constant-Voltage Charge: Initial charging current: less than 1.8A Voltage: 14.40 V ~ 15.00 V at 25 °C (77 °F) Charging time: 15 ~18h Constant-Current Charge: Charging current: 0.1C ₁₀ =0.60A, when charging voltage up to 14.40V, continue to charge 4h
	Floating Charge	No limit on Initial charging current Voltage: 13.50 V ~ 13.80 V at 25 °C (77 °F)